



BREAKFAST MENU

DECEMBER

Our Mission- "With patience and love we feed the leaders of the future."

MONDAY	TUESDAY	WEDNESDAY	THURSDAY
French Toast (NF,WG) Syrup 2	Breakfast Platter (NF,WG) (Egg, Sausage Links, & Biscuit) or Build Your Own Yogurt Parfait (NF, WG) (Yogurt, Granola, & Fruit) 3	Pumpkin Bar (NF, DF, SM,WG) String Cheese (NF, GF) 4	Chicken Breakfast Burrito (NF, WG) (Tortilla, Egg, Chicken, Cheese, & Tater Tots) 5
Chicken & Waffle (NF, DF,WG) Syrup 9	Breakfast Platter (NF,WG) (Egg, Tater Tots, & Muffin) or Build Your Own Yogurt Parfait (WG, NF) (Yogurt, Granola, & Fruit) 10	Pancakes (NF,WG) Sausage Links (NF, GF) 11	Breakfast Burrito (NF, WG) (Tortilla, Egg, Cheese, & Tater Tots) 12
Breakfast Waffle Sandwich (NF,WG) (Egg & Cheese) 16	Breakfast Platter (NF,WG) (Egg, Sausage Links, & Biscuit) or Build Your Own Yogurt Parfait (NF, WG) (Yogurt, Granola, & Fruit) 17	Cinnamon & Sugar Donut (NF,WG) Hot Chocolate w/ (GF,NF) Whipped Topping 18	Breakfast Bowl (NF, WG) (Egg, Chicken Sausage, Tater Tots, Cheese, & Biscuit) 19



Winter Break



Daily Offerings

White Milk
Chocolate Milk (Lunch Only)
100% Fruit Juice
Full Service Salad Bar

Breakfast Choice

Cereal Variety

Lunch Choice

Daily- PB&J Sandwich
(Strawberry or Grape)
Daily-Turkey Deli Sandwich
Daily-Garden Salad w/ Turkey & Cheese (Middle Schools Only)

Student Second Meal

Breakfast \$1.00
Lunch \$2.60

Adult Meal

Breakfast \$2.50
Lunch \$4.00

To view our monthly menus:
school.mealviewer.com
Menu items are subject to change.

To make payments:
www.schoolbucks.com

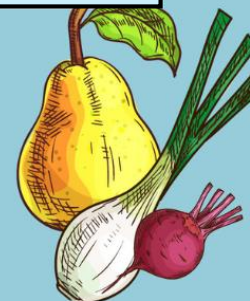
Questions or comments, please call
Nutrition Services Office at
520-876-3411

This Institution is an equal
opportunity provider

DF= Dairy Free
SM= Scratch Made
NF= Nut Free
GF= Gluten Free
WG= Whole Grain
P= Pork

In Harvest
Citrus

Recipe Highlight
Cinnamon & Sugar Donut
Hot Chocolate w/
Whipped Topping





LUNCH

MENU

DECEMBER

Our Mission- "With patience and love we feed the leaders of the future."

MONDAY	TUESDAY	WEDNESDAY	THURSDAY
Mesquite Chicken Drumstick (NF, GF, & DF) Mashed Potatoes (NF, GF) Biscuit (WG)	Hot Dog (NF, GF, DF, WG) Seasoned Fries (NF, DF) Mustard	Cheese Ravioli (NF, WG) Garlic Breadstick (NF)	Pepperoni Pizza (NF, WG, P) Or Mozzarella Sticks w/ Marinara Sauce (NF, WG) Caesar Salad (SM, NF, WG)
Popcorn Chicken (NF, DF, WG) Seasoned Fries (NF, DF) BBQ Sauce	Cheeseburger (NF, DF, WG) Green Beans (NF, GF, DF) Lettuce & Tomato Mayonnaise & Mustard	Tamale (WG, GF, NF) Elote (SM, NF, GF) Gingerbread (SM, WG, NF)	Pepperoni Pizza (NF, WG, P) Or Cheesy Garlic French Bread Pizza (NF, WG) Caesar Salad (SM, NF, WG)
Chicken Meatballs & Gravy (NF, DF) Mashed Potatoes (NF, GF, DF) Garlic Breadstick (GF, WG)	Soft Chicken Tacos (NF, DF, WG) Salsa (SM, GF, NF, DF) Elote (SM, NF, GF)	Ground Beef Pasta w/ Spaghetti Sauce (NF, DF, WG) Garlic Breadstick (NF, WG)	Pepperoni Pizza (NF, WG, P) Or Mozzarella Sticks w/ Marinara Sauce (NF, WG) Caesar Salad (SM, NF, WG)

Daily Offerings

White Milk
Chocolate Milk (Lunch Only)
100% Fruit Juice
Full Service Salad Bar

Breakfast Choice

Cereal Variety

Lunch Choice

Daily- PB&J Sandwich (Strawberry or Grape)
Daily-Turkey Deli Sandwich
Daily-Garden Salad w/ Turkey & Cheese (Middle Schools Only)

Student Second Meal

Breakfast \$1.00
Lunch \$2.60

Adult Meal

Breakfast \$2.50
Lunch \$4.00

To view our monthly menus:
school.mealviewer.com

Menu items are subject to change.

To make payments:
www.schoolbucks.com

Questions or comments, please call
Nutrition Services Office at
520-876-3411

This Institution is an equal
opportunity provider



Winter Break



DF= Dairy Free
SM= Scratch Made
NF= Nut Free
GF= Gluten Free
WG= Whole Grain
P= Pork

Daily Condiments

Ranch
Ketchup

Recipe Highlight

Tamale
Elote
Gingerbread

In Harvest

Ginger

